

PHD Activity Sheet // The 'Come' Command

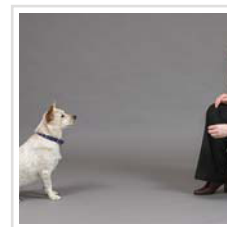
The 'come' or recall is a crucial command for both safety and obedience purposes. It is important that you can command your dog to 'come' to you to avoid potential dangers, as well as avoid the frustration of your dog not coming to you if called. Your dog is more likely to come to you if you use a bright and positive voice.



Step 1

'Come'

Kneel down slightly and call your dog's name, followed by the word 'come' in a bright tone of voice.



Step 2

'Yes'

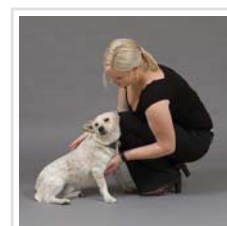
As soon as your dog looks at you and starts heading in your direction, bridge him/her with 'yes'. This will capture the behaviour you are wanting whilst he/she is in the act.



Step 3

Reward

When your dog comes to you, reward with a food reward and lavish praise. If your dog is some distance from you, you may have to repeat the command and bridge ('yes'), so they are less likely to become distracted on the way over to



Step 4

Practice

Practise, practise and more practise. The recall can take some time to perfect. Never call your dog to punish him/her, as this will make it very difficult enforcing your pet to 'come' to you in future.



The OPTIMUM® Pet Health Drive™ is a program designed to give you tailored information specific to your dog or cat's life stage or lifestyle. Log on and use the online tracker to see the 21 day difference in your pet when you feed them OPTIMUM® dry product.



OPTIMUM®
pethealthdrive™

www.optimumpet.com.au